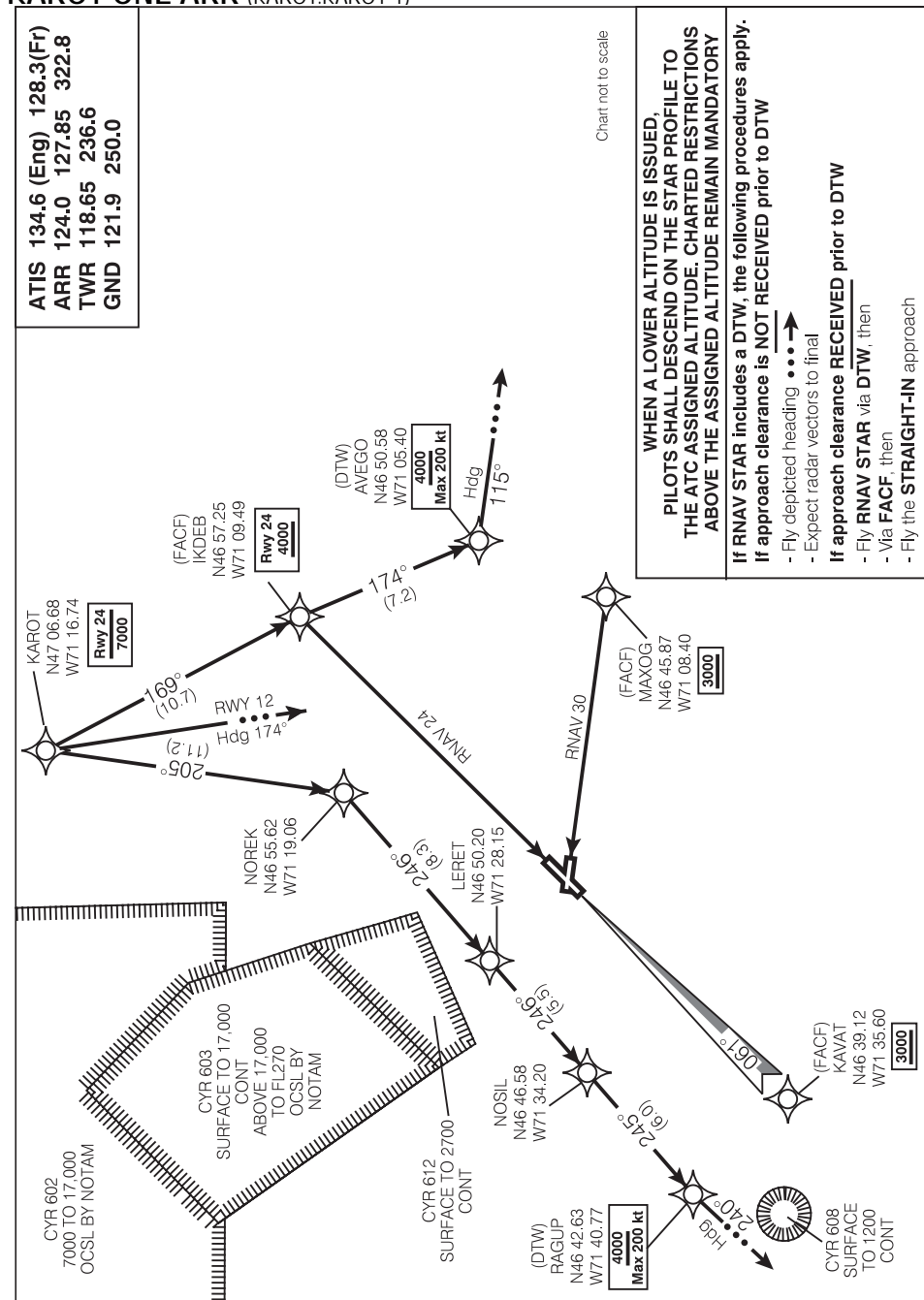


STAR (RNAV)

KAROT ONE ARR (KAROT.KAROT 1)

QUÉBEC/JEAN LESAGE INTL  
QUÉBEC QC



Source of Canadian Civil Aeronautical Data : © 2012 NAV CANADA. All rights reserved

KAROT ONE ARR (KAROT.KAROT 1)

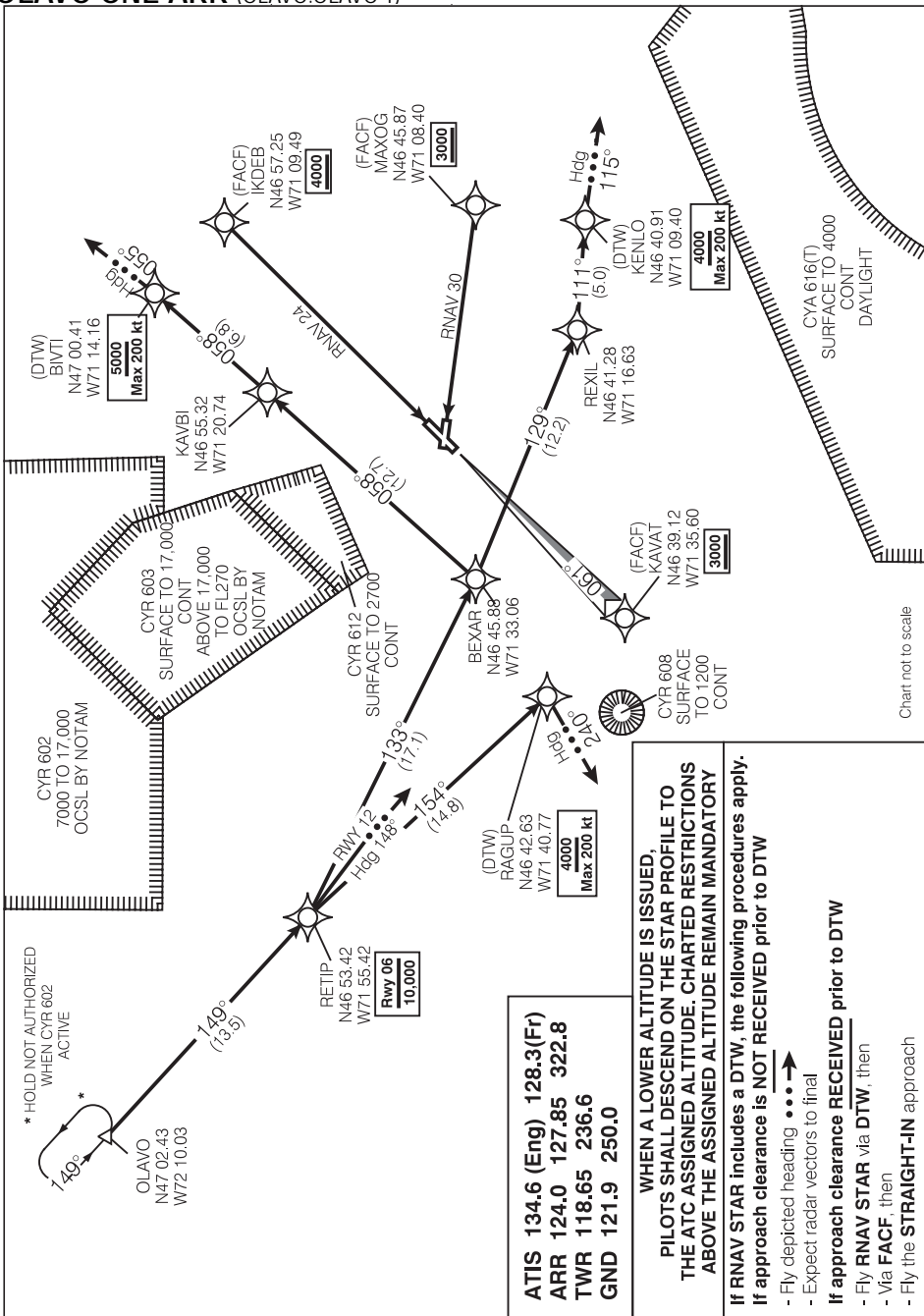
VAR 17° W (2010)

QUÉBEC QC  
QUÉBEC/JEAN LESAGE INTL

STAR (RNAV)

**OLAVO ONE ARR (OLAVO.OLAVO 1)**

QUÉBEC/JEAN LESAGE INTL  
QUÉBEC QC



Source of Canadian Civil Aeronautical Data : © 2012 NAV CANADA. All rights reserved

Chart not to scale

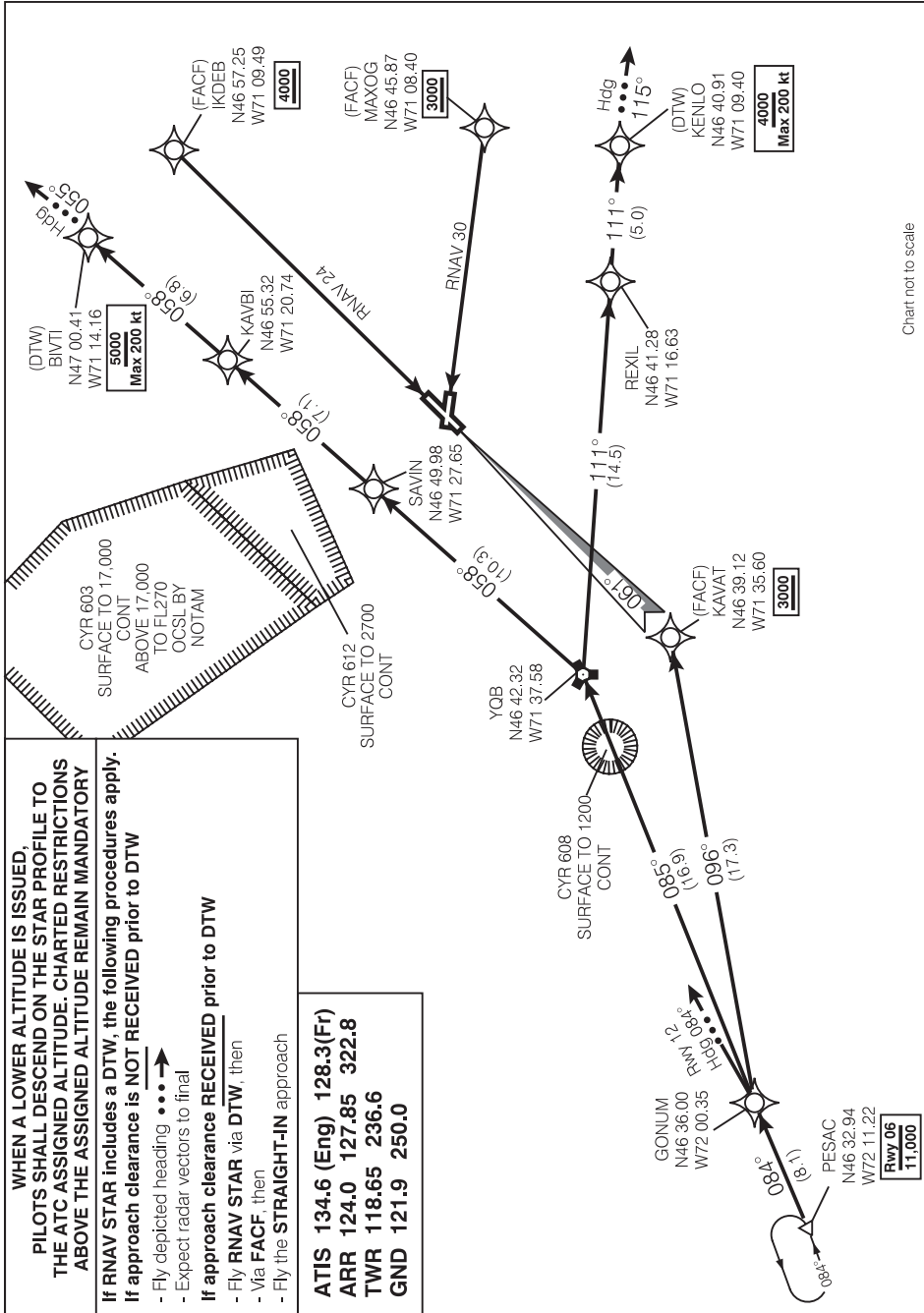
**OLAVO ONE ARR (OLAVO.OLAVO 1)**

VAR 17° W (2010)

QUÉBEC QC  
QUÉBEC/JEAN LESAGE INTL

STAR (RNAV)  
**PESAC ONE ARR** (PESAC.PESAC 1)

QUÉBEC/JEAN LESAGE INTL  
 QUÉBEC QC



**PESAC ONE ARR** (PESAC.PESAC 1)

VAR 17° W (2010)

QUÉBEC QC  
 QUÉBEC/JEAN LESAGE INTL

STAR (RNAV)

ROGSA ONE ARR (ROGSA.ROGSA 1)

QUÉBEC/JEAN LESAGE INTL  
QUÉBEC QC

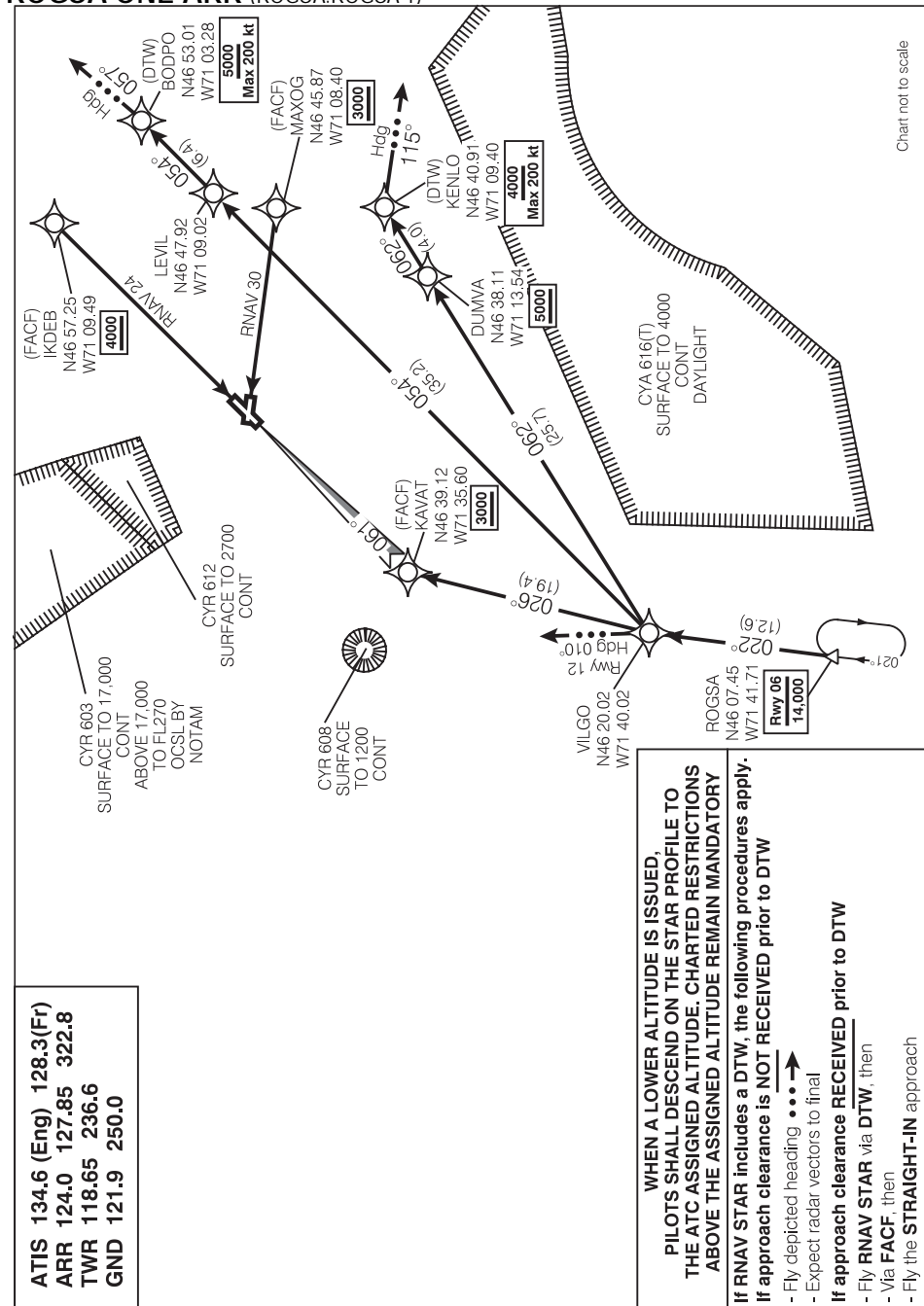


Chart not to scale

Source of Canadian Civil Aeronautical Data : © 2012 NAV CANADA All rights reserved

ATIS 134.6 (Eng) 128.3 (Fr)  
ARR 124.0 127.85 322.8  
TWR 118.65 236.6  
GND 121.9 250.0

**WHEN A LOWER ALTITUDE IS ISSUED, PILOTS SHALL DESCEND ON THE STAR PROFILE TO THE ATC ASSIGNED ALTITUDE. CHARTED RESTRICTIONS ABOVE THE ASSIGNED ALTITUDE REMAIN MANDATORY**

**If RNAV STAR includes a DTW, the following procedures apply.**  
**If approach clearance is NOT RECEIVED prior to DTW**  
 - Fly depicted heading ●●●→  
 - Expect radar vectors to final  
**If approach clearance RECEIVED prior to DTW**  
 - Fly RNAV STAR via DTW, then  
 - Via FACP, then  
 - Fly the STRAIGHT-IN approach

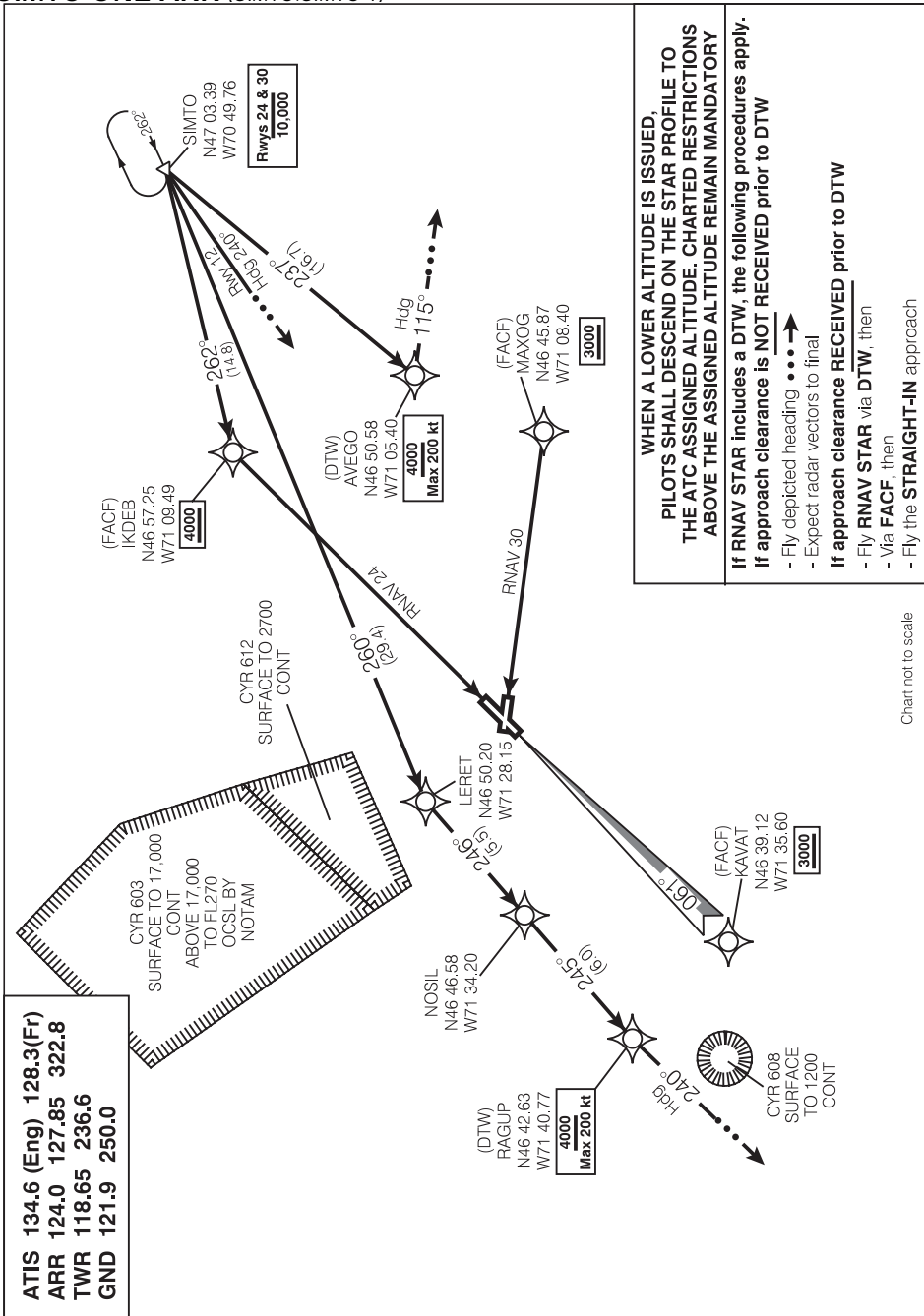
ROGSA ONE ARR (ROGSA.ROGSA 1)

VAR 17° W (2010)

QUÉBEC QC  
QUÉBEC/JEAN LESAGE INTL

STAR (RNAV)  
SIMTO ONE ARR (SIMTO.SIMTO 1)

QUÉBEC/JEAN LESAGE INTL  
QUÉBEC QC



SIMTO ONE ARR (SIMTO.SIMTO 1)

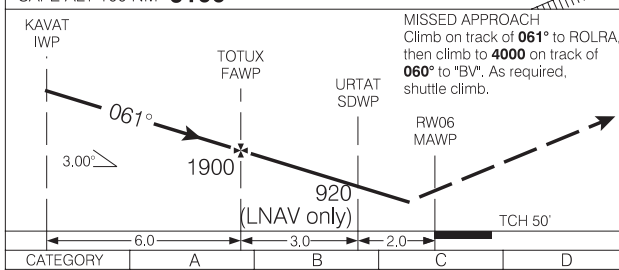
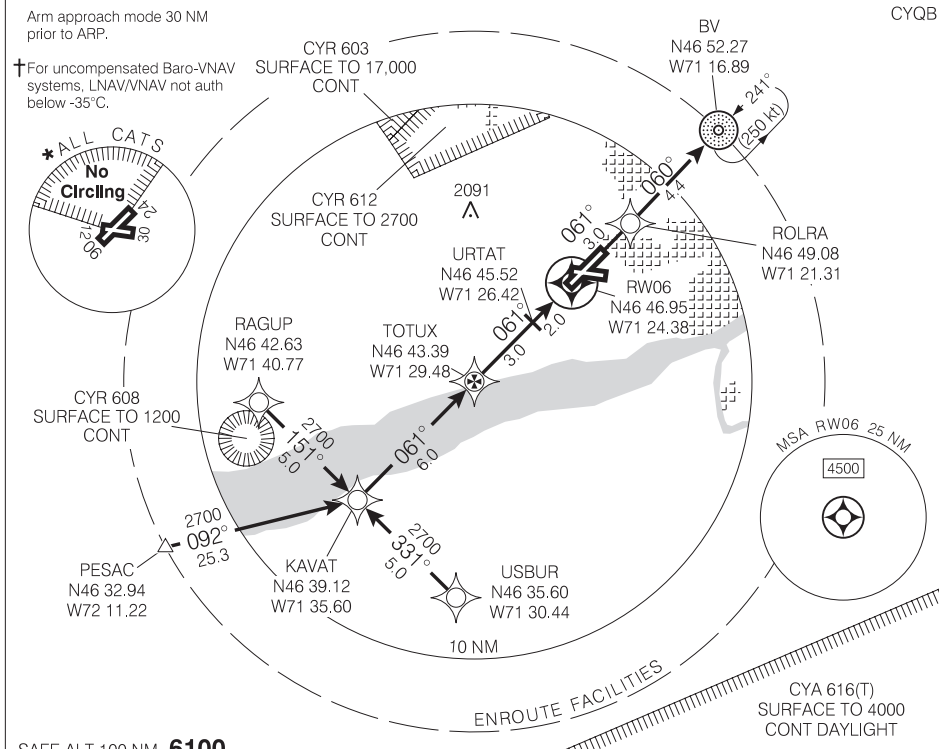
VAR 17° W (2010)

QUÉBEC QC  
QUÉBEC/JEAN LESAGE INTL  
NAD83

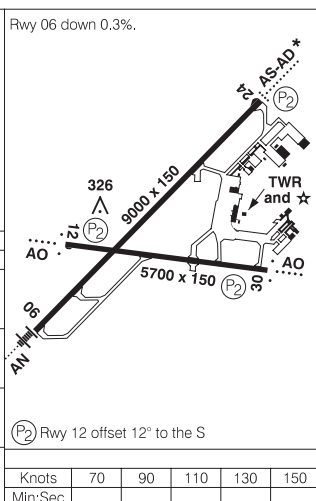
Source of Canadian Civil Aeronautical Data : © 2012 NAV CANADA All rights reserved  
Chart not to scale

RNAV (GNSS) RWY 06

<b>ATIS</b> <b>134.6 (Eng)</b> <b>128.3 (Fr)</b>	<b>ARR/DEP</b> <b>124.0 127.85</b> <b>322.8</b>	<b>TWR</b> <b>118.65</b> <b>236.6</b>	<b>GND</b> <b>121.9</b> <b>250.0</b>	<b>ELEV 244</b>
				<b>TDZE 06 244</b>



CATEGORY	A	B	C	D
† LNAV / VNAV	<b>620</b>	(376)	1 RVR 50	
LNAV	<b>620</b>	(376)	1 RVR 50	
* CIRCLING	<b>760</b>	(516) 1 ½	<b>760</b>	<b>860</b>
			(516) 2	(616) 2



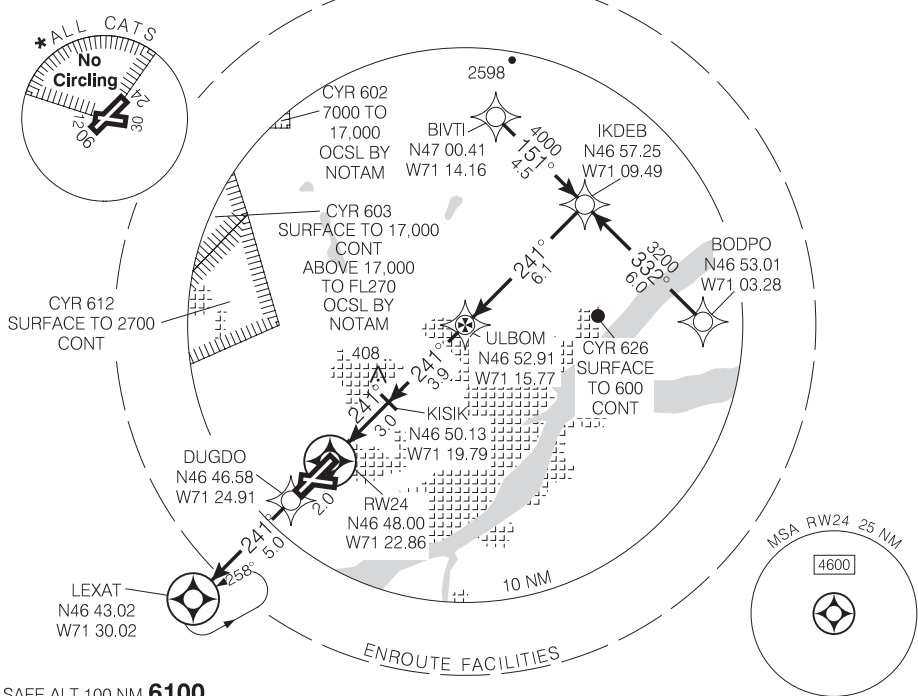
RNAV (GNSS) RWY 06

RNAV (GNSS) RWY 24

<b>WAAS</b> CH 80103 W24A	<b>ATIS</b> 134.6 (Eng) 128.3 (Fr)	<b>ARR/DEP</b> 124.0 127.85 322.8	<b>TWR</b> 118.65 236.6	<b>GND</b> 121.9 250.0	<b>ELEV 244</b> <b>TDZE 24 222</b>
---------------------------------	--	---	-------------------------------	------------------------------	---------------------------------------

† For uncompensated Baro-VNAV systems, LNAV/VNAV not auth below -35°C.

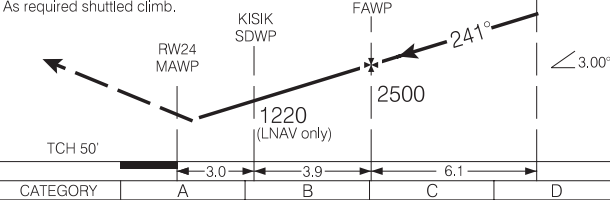
CYQB



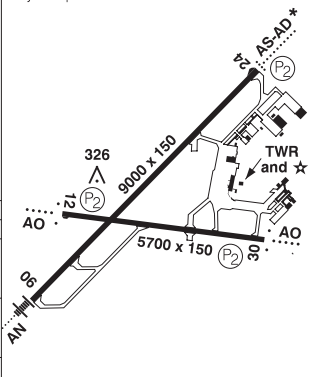
SAFE ALT 100 NM **6100**

MISSED APPROACH

Climb to **4000** on track of **241°** via DUGDO to LEXAT. As required shuttled climb.



Rwy 24 up 0.3%



CATEGORY	A	B	C	D
LPV	<b>480</b>	(258)	1 RVR 50	
† LNAV / VNAV	<b>680</b>	(458)	1 ½	
LNAV	<b>640</b>	(418)	1 ¼	
* CIRCLING	<b>760</b> (516)	1 ½	<b>760</b> (516) 2	<b>860</b> (616) 2

(P2) rwy 12 offset 12° to the S

Knots	70	90	110	130	150
Min:Sec					

RNAV (GNSS) RWY 24

464728N 712336W

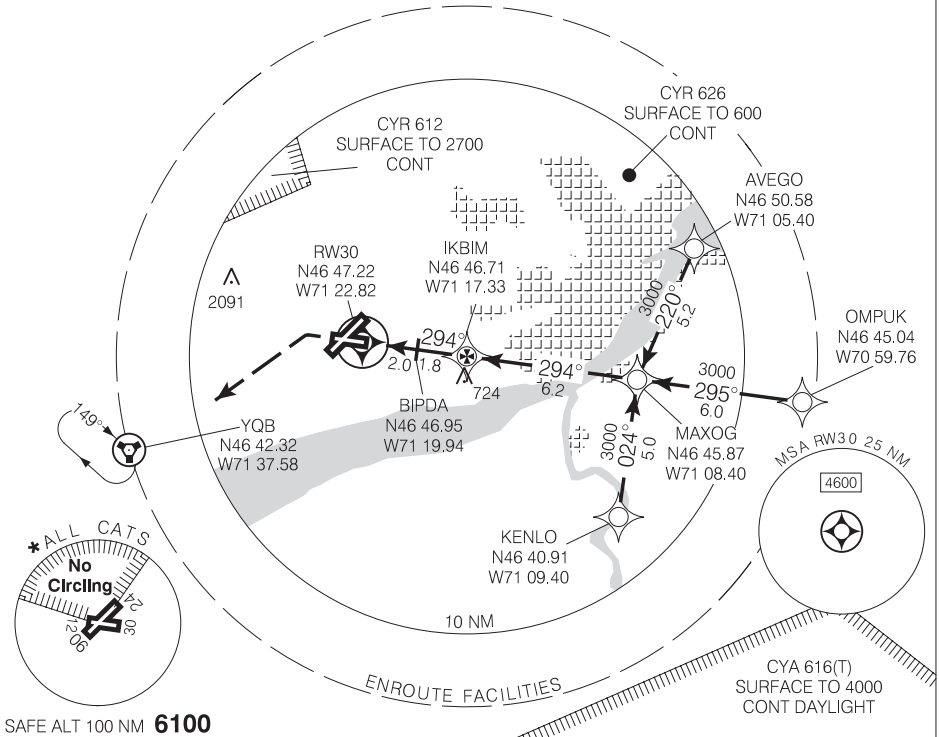
VAR 17° W  
(2010)

QUÉBEC QC  
QUÉBEC/JEAN LESAGE INTL

RNAV (GNSS) RWY 30

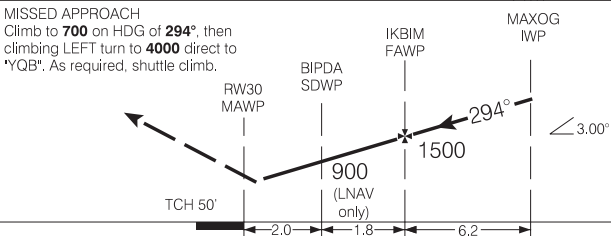
<b>WAAS</b> <b>CH 80104</b> <b>W30A</b>	<b>ATIS</b> <b>134.6 (Eng)</b> <b>128.3 (Fr)</b>	<b>ARR/DEP</b> <b>124.0 127.85</b> <b>322.8</b>	<b>TWR</b> <b>118.65</b> <b>236.6</b>	<b>GND</b> <b>121.9</b> <b>250.0</b>	<b>ELEV 244</b>
					<b>TDZE 30 233</b>

CYQB

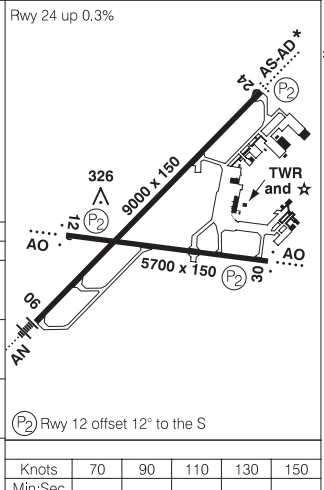


SAFE ALT 100 NM **6100**

**MISSED APPROACH**  
 Climb to **700** on HDG of **294°**, then climbing **LEFT** turn to **4000** direct to "YQB". As required, shuttle climb.



CATEGORY	A	B	C	D
LPV	<b>490</b>	(257)	1 RVR 50	
LNAV	<b>620</b>	(387)	1 ¼	
* CIRCLING	<b>760</b>	(516) 1 ½	<b>760</b>	<b>860</b>
			(516) 2	(616) 2



Knots	70	90	110	130	150
Min:Sec					

Source of Canadian Civil Aeronautical Data : © 2012 NAV CANADA. All rights reserved.

RNAV (GNSS) RWY 30

464728N 712336W

VAR 17° W (2010) QUÉBEC QC

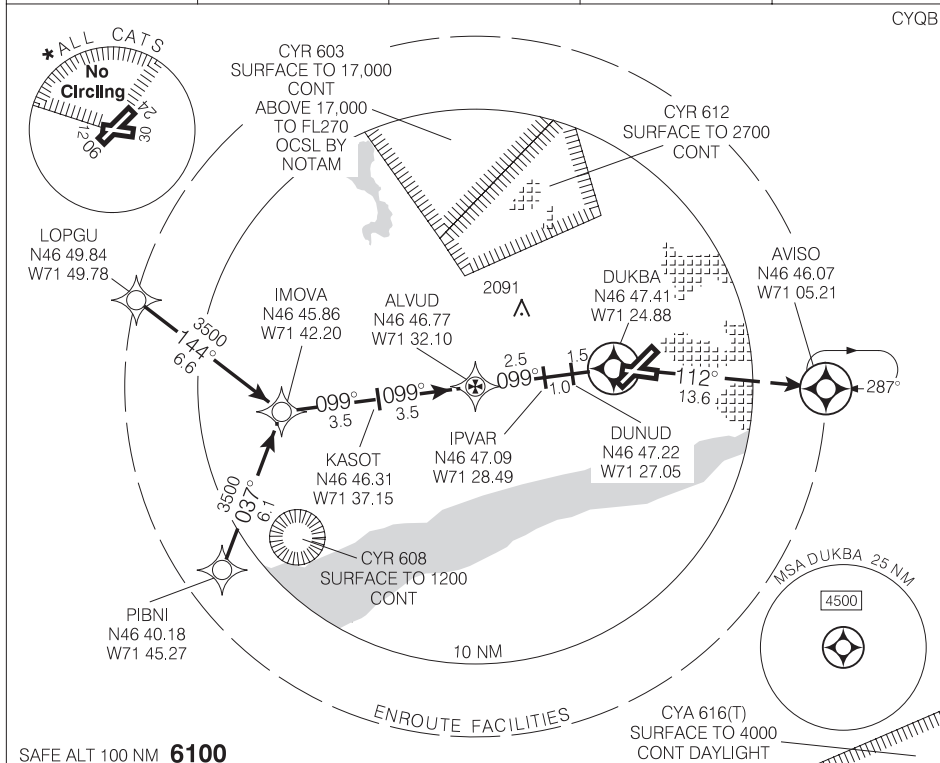
QUÉBEC/JEAN LESAGE INTL



RNAV (GNSS) A

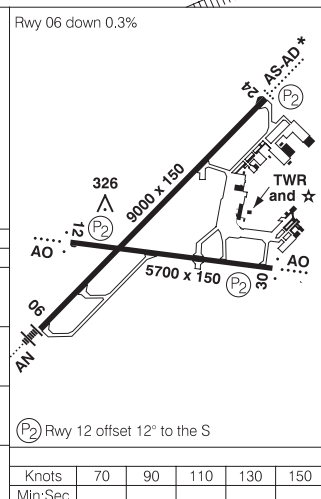
<b>ATIS</b> 134.6 (Eng) 128.3 (Fr)	<b>ARR/DEP</b> 124.0 127.85 322.8	<b>TWR</b> 118.65 236.6	<b>GND</b> 121.9 250.0	<b>ELEV 244</b>
--	---	-------------------------------	------------------------------	-----------------

CYQB



SAFE ALT 100 NM **6100**

IMOVA IWP	KASOT SDWP	ALVUD FAWP	IPVAR SDWP	DUNUD SDWP	DUKBA MAWP	MISSED APPROACH Climb to <b>3000</b> on track of <b>112°</b> to AVISO. Shuttle climb to <b>3200</b> BPOC.
2500	1500	1500	1120			Rwy 06 down 0.3%
←3.5	←3.5	←2.5	←1.0	←1.5	←0.3	
CATEGORY	A		B		C	D
LNAV / VNAV	NOT AUTHORIZED					
LNAV	NOT AUTHORIZED					
* CIRCLING	<b>760</b>	(516)	1 ½	<b>760</b>	<b>860</b>	(616) 2
				(516) 2	(616) 2	



Knots	70	90	110	130	150
Min:Sec					

RNAV (GNSS) A

VAR 17° W  
(2010)

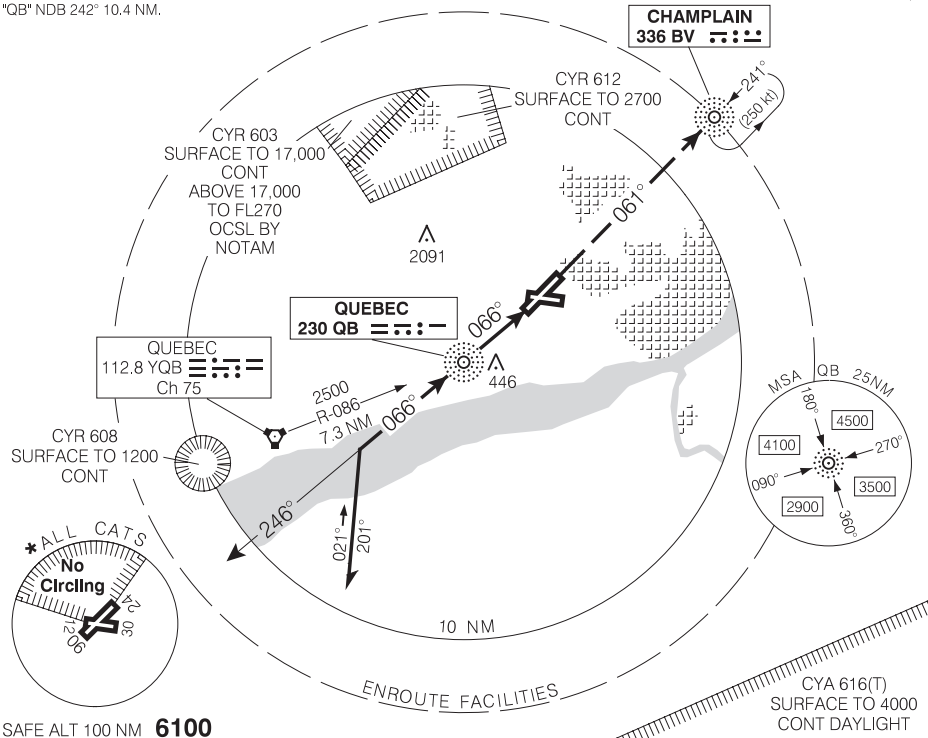
QUÉBEC QC  
QUÉBEC/JEAN LESAGE INTL  
NAD83

NDB RWY 06

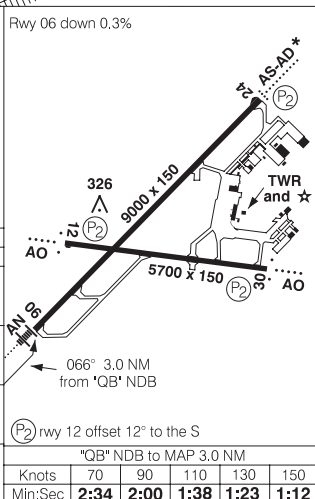
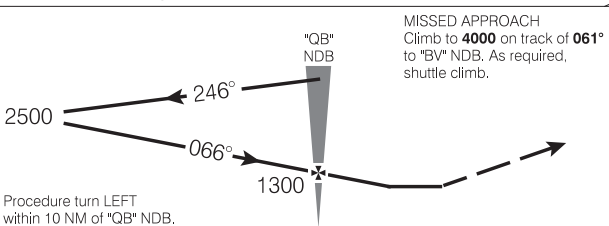
<b>ATIS</b> 134.6 (Eng) 128.3 (Fr)	<b>ARR/DEP</b> 124.0 127.85 322.8	<b>TWR</b> 118.65 236.6	<b>GND</b> 121.9 250.0	<b>ELEV 244</b> <b>TDZE 06 244</b>
--	---	-------------------------------	------------------------------	---------------------------------------

3100 from "BV" NDB to "QB" NDB 242° 10.4 NM.

CYQB



Source of Canadian Civil Aeronautical Data : © 2012 NAV CANADA. All rights reserved



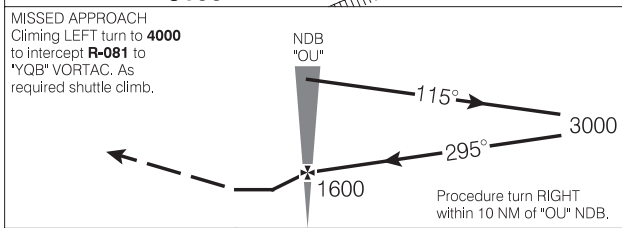
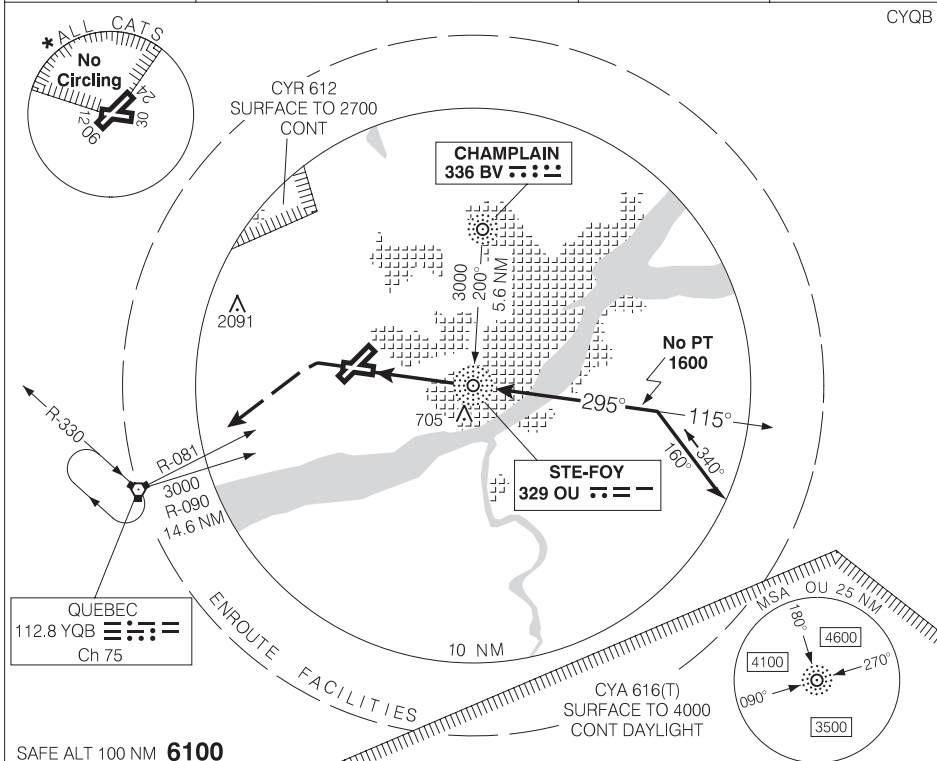
CATEGORY	A	B	C	D
NDB	660 (416)		1 RVR 50	
* CIRCLING	760 (516)	1½	760 (516)	860 (616) 2

NDB RWY 06

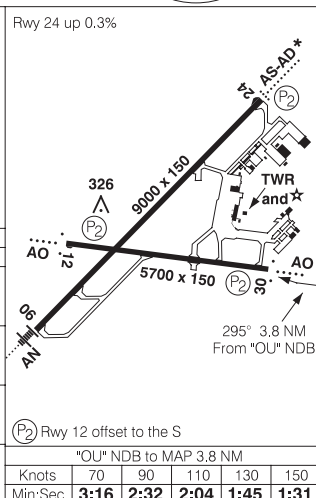
NDB RWY 30

<b>ATIS</b> 134.6 (Eng) 128.3 (Fr)	<b>ARR/DEP</b> 124.0 127.85 322.8	<b>TWR</b> 118.65 236.6	<b>GND</b> 121.9 250.0	<b>ELEV 244</b> <b>TDZE 30 233</b>
--	---	-------------------------------	------------------------------	---------------------------------------

CYQB



CATEGORY	A	B	C	D
NDB	740	(507)	1 1/2	
* CIRCLING	760 (516) 1 1/2	760 (516) 2	860 (616) 2	



NDB RWY 30

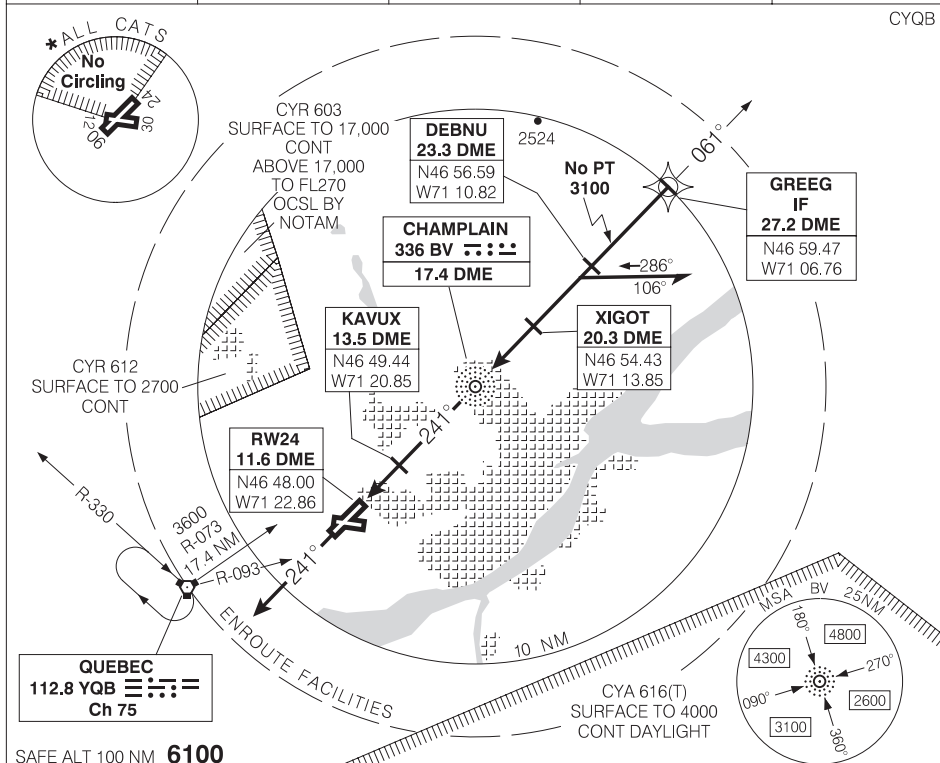
VAR 17° W (2010)

464728N 712336W

NDB/DME RWY 24

<b>ATIS</b> 134.6 (Eng) 128.3 (Fr)	<b>ARR/DEP</b> 124.0 127.85 322.8	<b>TWR</b> 118.65 236.6	<b>GND</b> 121.9 250.0	<b>ELEV 244</b>
				<b>TDZE 24 222</b>

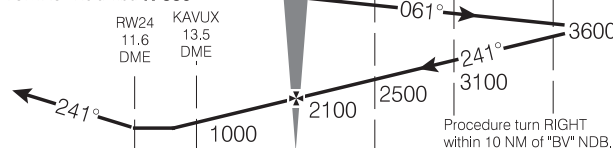
CYQB



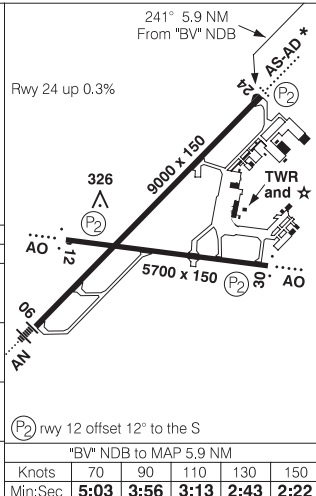
SAFE ALT 100 NM **6100**

MISSED APPROACH

Climb to **4000** on track of **241°** to intercept **R-093** to "YQB" VORTAC. Hold inbd **R-330**.



CATEGORY	A		B		C		D	
NDB/DME	<b>700</b>		(464)		1 ½			
* CIRCLING	<b>760</b> (516) 1 ½		<b>760</b> (516) 2		<b>860</b> (616) 2			



NDB/DME RWY 24

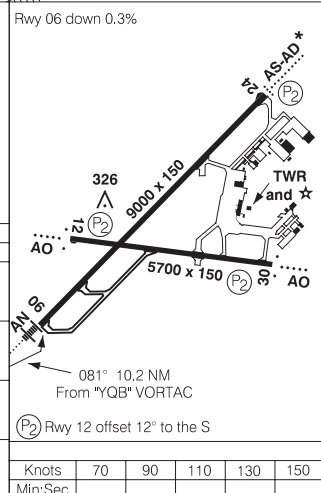
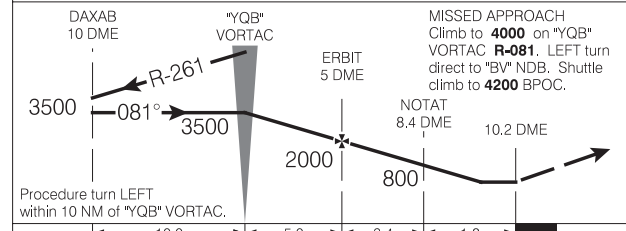
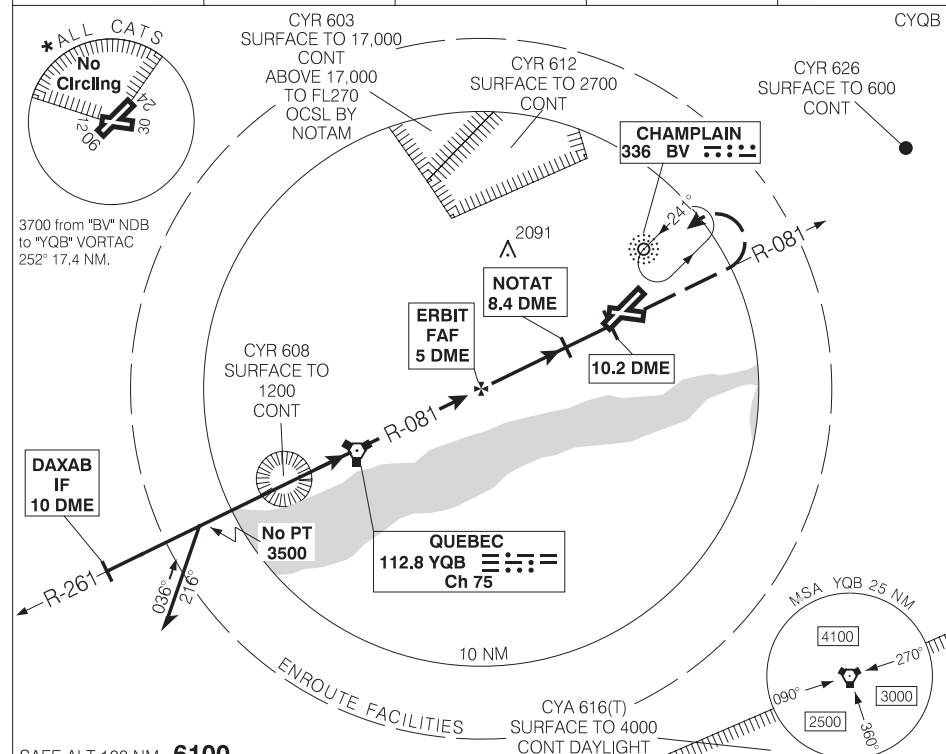
464728N 712336W

VAR 17°W

QUÉBEC/JEAN LESAGE INTL

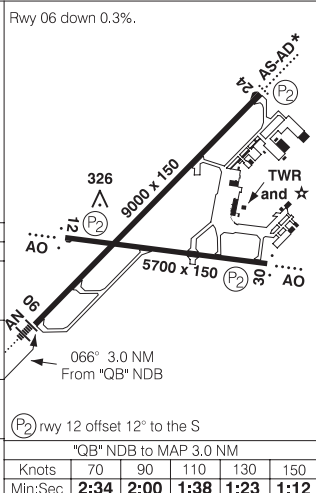
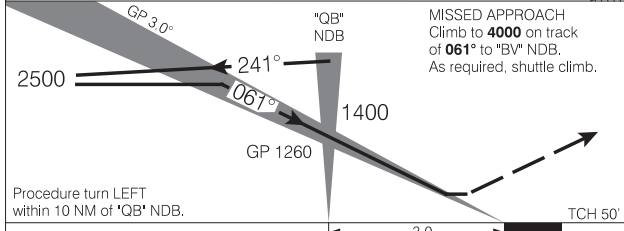
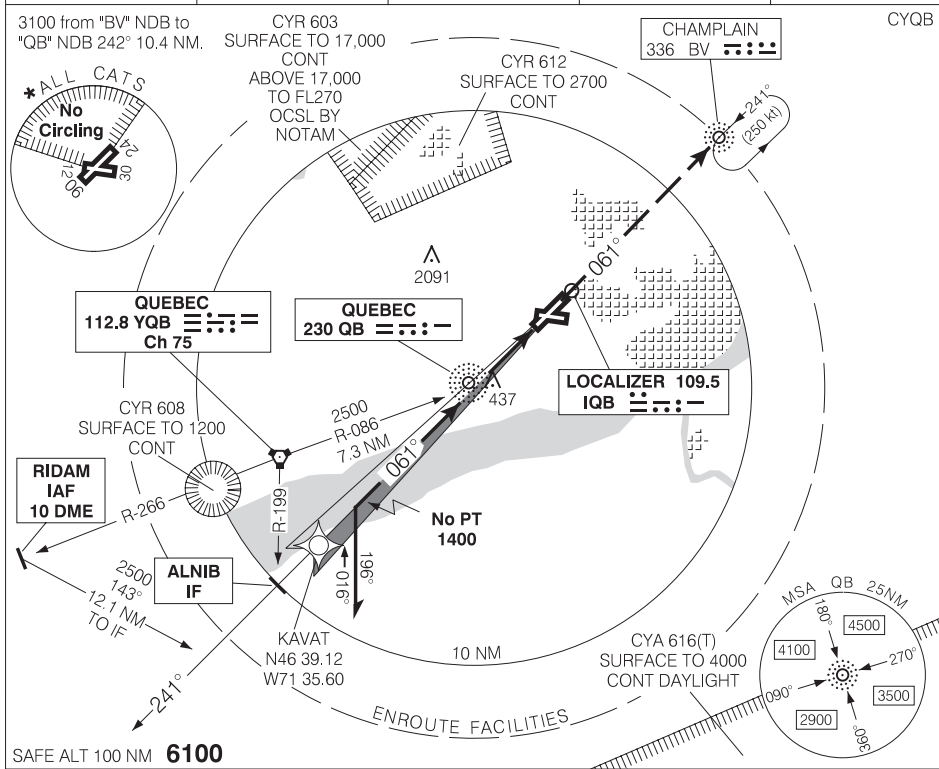
VOR/DME RWY 06

<b>ATIS</b> 134.6 (Eng) 128.3 (Fr)	<b>ARR/DEP</b> 124.0 127.85 322.8	<b>TWR</b> 118.65 236.6	<b>GND</b> 121.9 250.0	<b>ELEV 244</b>
				<b>TDZE 06 244</b>



ILS RWY 06

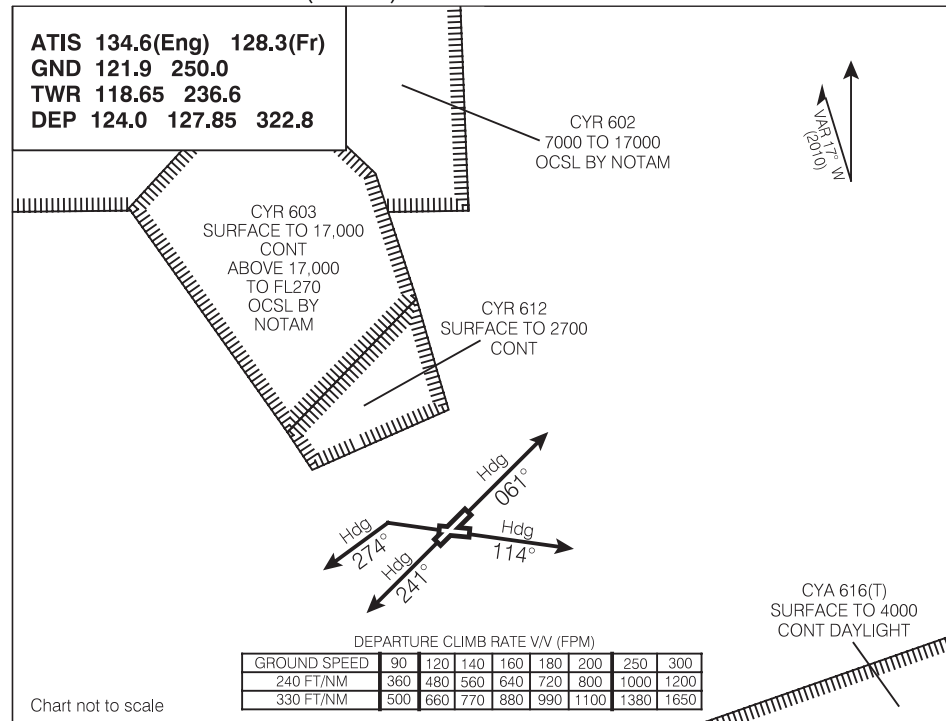
<b>ATIS</b> 134.6 (Eng) 128.3 (Fr)	<b>ARR/DEP</b> 124.0 127.85 322.8	<b>TWR</b> 118.65 236.6	<b>GND</b> 121.9 250.0	<b>ELEV 244</b> <b>TDZE 06 244</b>
--	---	-------------------------------	------------------------------	---------------------------------------



CATEGORY	A	B	C	D
ILS	<b>444</b>	(200)	½ RVR 26	
LOC	<b>600</b>	(356)	1 RVR 50	
*CIRCLING	<b>760</b>	(516) 1 ½	<b>760</b>	<b>860</b>
			(516) 2	(616) 2

*QB' NDB to MAP 3.0 NM				
Knots	70	90	110	130 150
Min:Sec	<b>2:34</b>	<b>2:00</b>	<b>1:38</b>	<b>1:23 1:12</b>

ILS RWY 06



**DEPARTURE ROUTE DESCRIPTION**

- Rwy 06:**
1. Requires a minimum climb gradient of 240 ft/NM to 2100.
  2. Climb HDG 061° or as assigned by ATC for radar vectors. Maintain 4000 ASL or as assigned.
- Note: Trees to 290 ASL past departure end of runway.
- Rwy 12 :**
1. Climb HDG 114° or as assigned by ATC for radar vectors.
  2. Jet acft maintain 4000 ASL or as assigned. Non-jet acft maintain 3000 ASL or as assigned.
- Note: Trees to 299 ASL past departure end of runway.
- Rwy 24 :**
1. Climb HDG 241° or as assigned by ATC for radar vectors.
  2. Jet acft maintain 4000 ASL or as assigned. Non-jet acft maintain 3000 ASL or as assigned.
- Note: Trees to 325 ASL past departure end of runway.
- Rwy 30:**
1. Requires a minimum climb gradient of 330 ft/NM to 1600.
  2. Climbing left turn HDG 274° or as assigned by ATC for radar vectors.
  3. Jet acft maintain 4000 ASL or as assigned. Non-jet acft maintain 3000 ASL or as assigned.
- Note: Trees to 312 ASL past departure end of rwy centreline both sides.

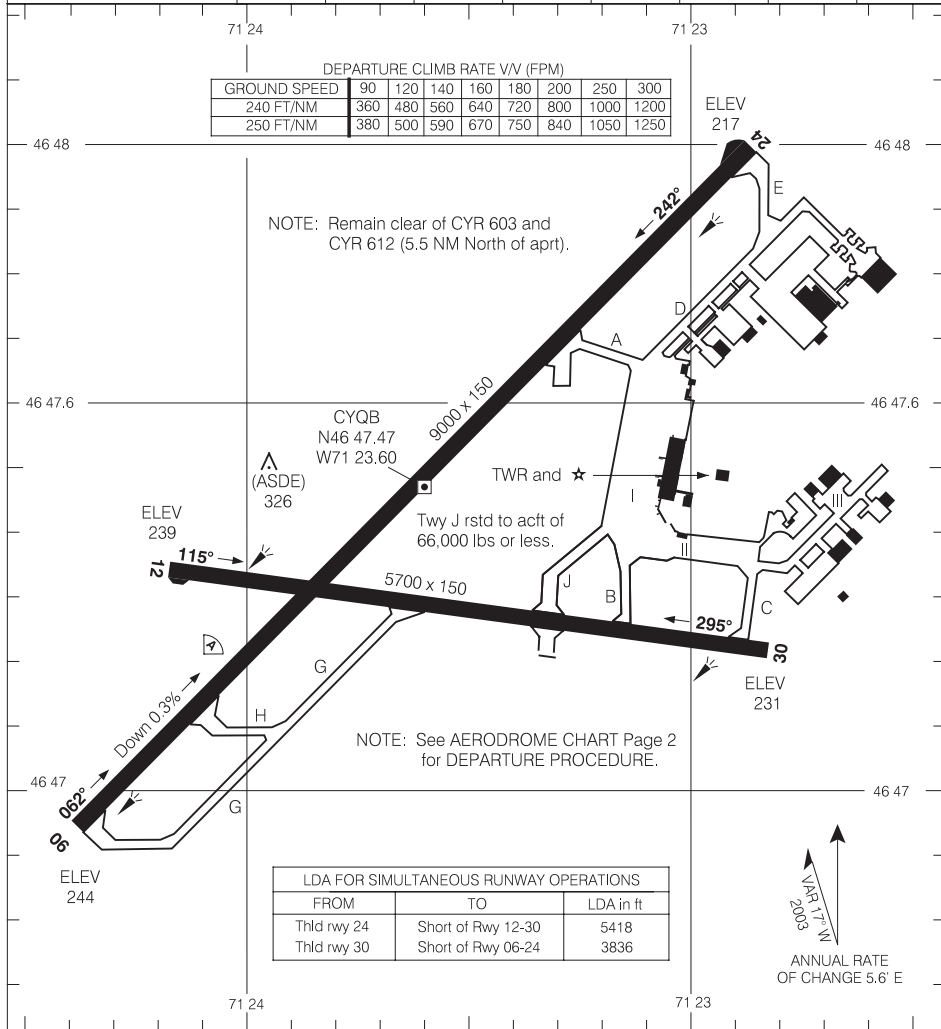
**COMMUNICATION FAILURE**

1. Select transponder mode C/3 code 7600.
2. Climb to flight planned altitude 3 minutes after take-off, and
3. Proceed on course 3 minutes after selecting 7600.

AERODROME CHART (Page 1)

<b>ATIS</b> 134.6 (Eng) 128.3 (Fr)	<b>GND</b> 121.9 250.0	<b>TWR</b> 118.65 236.6	<b>DEP</b> 124.0 127.85 322.8
--	------------------------------	-------------------------------	-------------------------------------

<b>DECLARED DISTANCES</b>	<b>06</b>	<b>24</b>	<b>12</b>	<b>30</b>		
TORA	9000	9000	5700	5700		
TODA	9984	9984	5700	5700		
ASDA	9000	9000	5700	5700		
LDA	9000	9000	5700	5700		



Source of Canadian Civil Aeronautical Data : © 2012 NAV CANADA. All rights reserved

AERODROME CHART (Page 1)



## AERODROME CHART (Page 2)

## NOTES:

\* DEPARTURE PROCEDURE

Rwy 06 - ½ - Requires a minimum climb gradient of **240** ft/NM to **2400**. CLB between HDG **018°** CW to **299°** to remain clear of CYR603 and CYR612. No turns below **2000**.

NOTE: Trees to 290 ASL past departure end of runway.

- or -

SPEC VIS - CLB visual over airport to **2400** (CAT A, B, & C) **2500** (CAT D). CLB between HDG **018°** CW to **299°** to remain clear of CYR603 and CYR612 BPOC.

Rwy 12 - ½ - CLB between HDG **018°** CW to **299°** to remain clear of CYR603 and CYR612. No turns below **4900**.

NOTE: Trees to 299 ASL past departure end of runway.

Rwy 24 - ½ - CLB between HDG **299°** CCW to **018°** to remain clear of CYR603 and CYR612. No turns below **4300**.

NOTE: Trees to 325 ASL past departure end of runway.

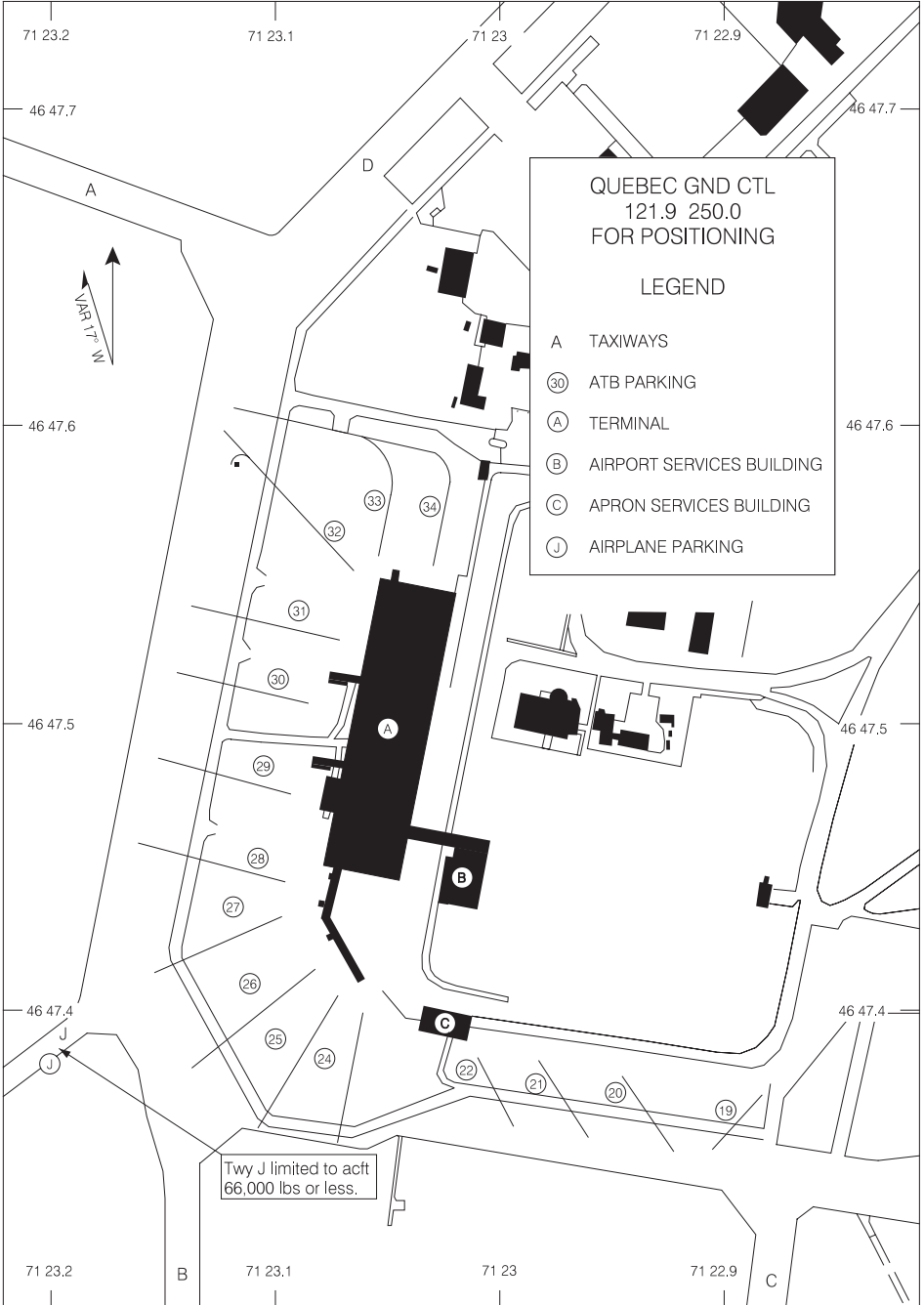
Rwy 30 - ½ - Requires a minimum climb gradient of **250** ft/NM to **1300**. Climbing left turn HDG **255°** CLB to **6100** BPOC.

NOTE: Trees to 312 ASL past departure end of rwy centreline both sides.

- or -

SPEC VIS - CLB visual over airport to **2400** (CAT A, B, & C) **2500** (CAT D). CLB between HDG **299°** CCW to **018°** to remain clear of CYR603 and CYR612 BPOC.

PARKING AREAS



PARKING AREAS